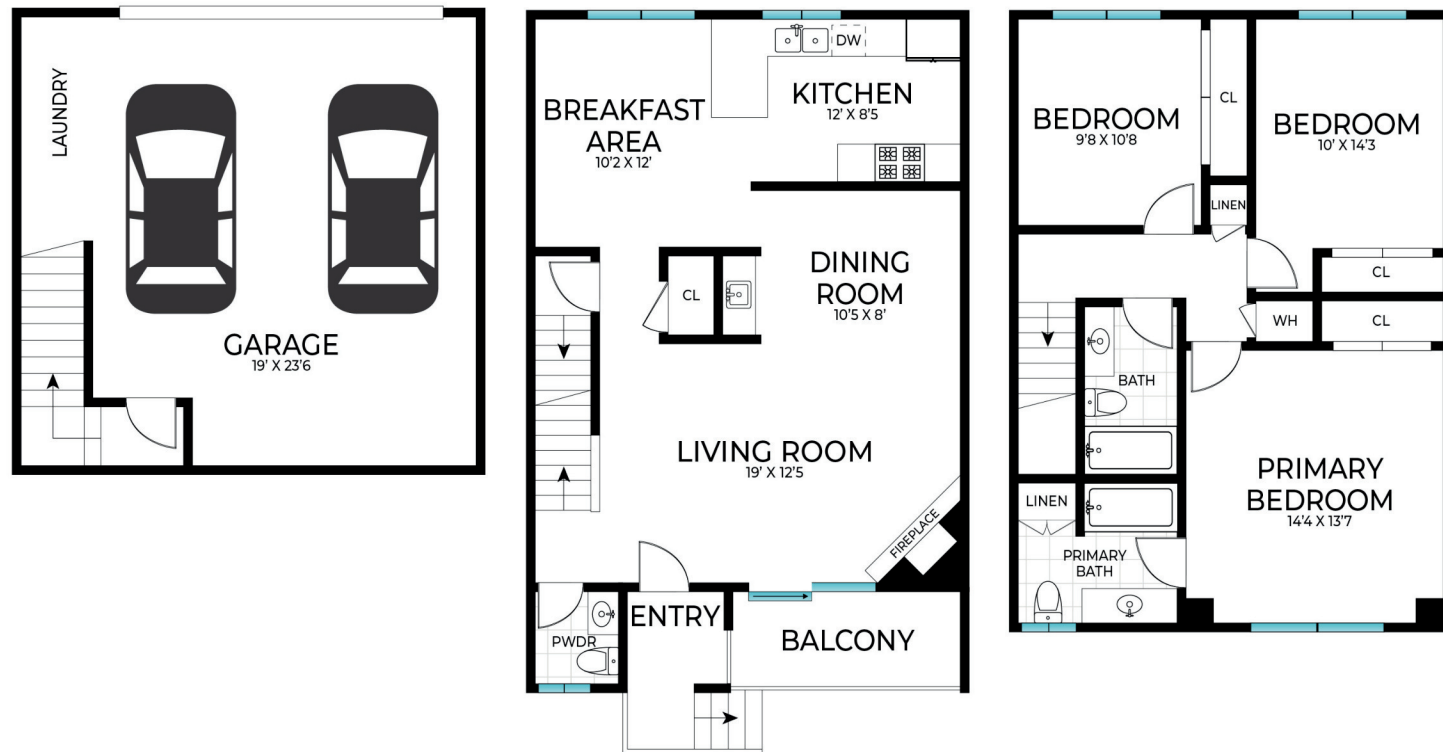


507 S Pomelo Ave #C, Monterey Park, CA 91755



Mike Chou
REALTOR®
DRE#: 01852861
mike@teamchou.com
626.653.6903



@thechouteam  Mike Chou



www.thechouteam.com

   @thechouteam
info@thechouteam.com



507 S POMELO AVE #C,
MONTEREY PARK, CA 91755



The Chou Team
Powered by Lucido Global

THE PREMIER LISTING TEAM



Condominium
HOA: \$175/month
3 Beds/3 Baths

Year Built: 1980
Floor Area: 1,367 Sq. Ft
2 Car Attached Garage

This charming condo is a perfect blend of comfort and practicality, ideal for anyone looking to settle in a new home.

Situated in the middle of the property, it offers a serene environment. On the first floor, you'll find a 2-car garage with direct access to the home, a welcoming living room with a fireplace and balcony, an open and airy kitchen, and a handy guest restroom. The kitchen boasts plenty of quartz countertop space and a delightful breakfast bar.

The second floor hosts three cozy bedrooms and two full bathrooms, all bathed in natural light thanks to large windows and a skylight, ensuring a bright and inviting interior. Enjoy the convenience of central AC/Heat, garage laundry hookups, and a low HOA fee covering water, sewer, and trash. This condo is an exceptional find in the San Gabriel Valley, perfect for first-time homeowners, investors, or families desiring a more manageable space.

Located in the esteemed Alhambra school district, with Vista Elementary School within walking distance. Also, enjoy close proximity to Garvey Ranch Park and a variety of shops and dining options on E Garvey Avenue. Don't miss the opportunity to see this home before it's gone!

